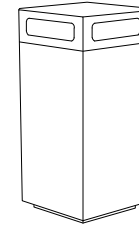


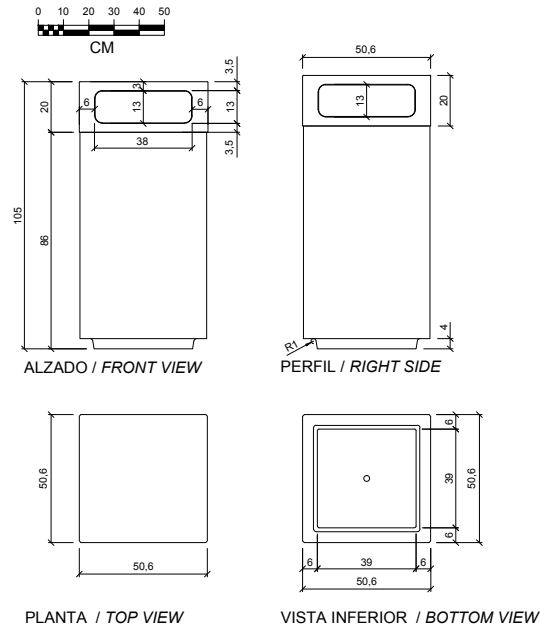
CARACTERÍSTICAS / FEATURES

Material hormigón petra 1
Acabado decapado e hidrofugado
Dimensiones l. 50'6, a. 50'6, h. 105 cm.
Color ver carta de colores
Fijación simplemente apoyado o mediante varilla y resina epoxy
Peso 270 Kg
Bulto 120 x 100 x 120 cm [4 unidades]
Peso bulto 1095 Kg

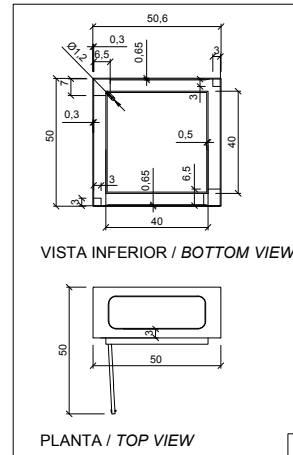
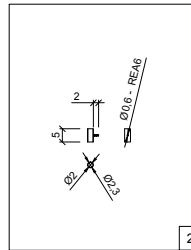
Material precast concrete petra 1
Finish sanded and waterproofed
Dimensions l. 50'6, w. 50'6, h. 105 cm
Colour see colour catalogue
Fixing resting on the ground or anchored with metal rod & epoxy resin
Weight 270 Kg
Package 120 x 100 x 1120 cm [4 units]
Weight package 1095 Kg



GEOMETRIA / GEOMETRY

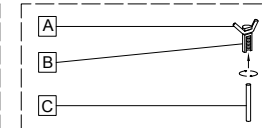


ACCESORIO / ACCESSORIES



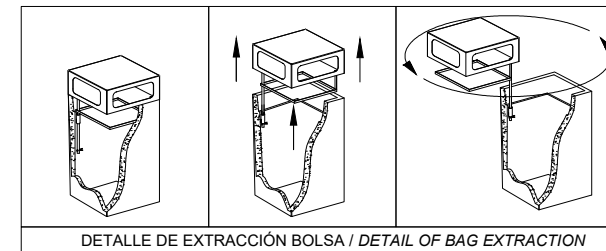
- A** barra corrugada / corrugated rod
- B** casquillo roscado / thread sleeve
- C** varilla roscada / thread the rod

SISTEMA DE FIJACIÓN / ANCHORAGE SYSTEM

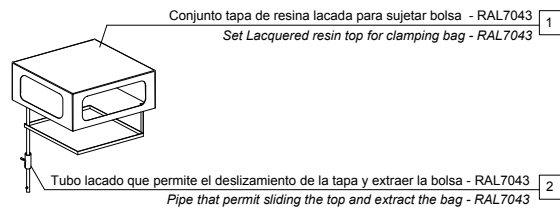


MANIPULACIÓN E INSTALACIÓN / HANDLING AND INSTALLATION

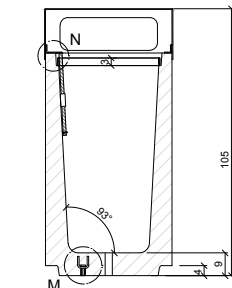
- 1** enroskar la varilla / thread the rod
 - 2** perforar agujero y verter resina epoxy dentro drill hole and pour resin epoxy inside hole
 - 3** insertar varilla roscada en agujero insert metal threaded rod in hole
- elevación / hoisting P=270 Kg
- varilla roscada / thread the rod
- elevación / hoisting P=270 Kg



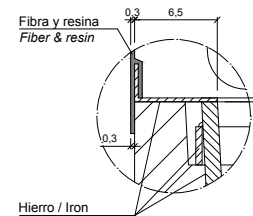
ESPECIFICACIONES / SPECIFICATIONS



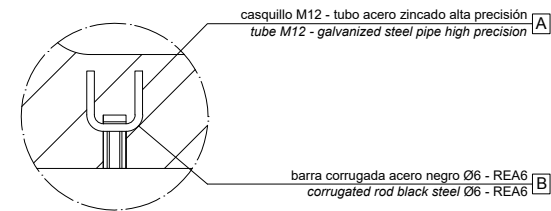
DETALLE ACCESORIO / ACCESSORIES DETAIL



SECCIÓN A-A' / SECTION A-A'



DETALLE: N / DETAIL: N



DETALLE: M / DETAIL: M