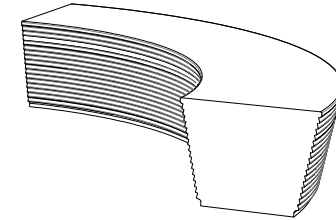


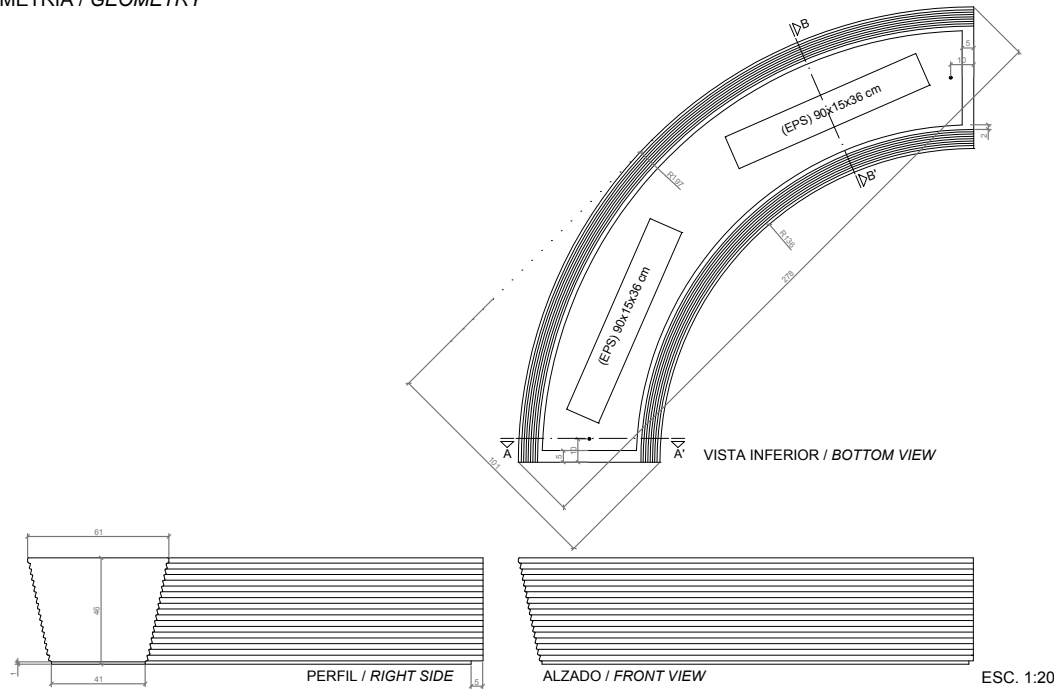
CARACTERÍSTICAS / FEATURES

**Material** hormigón Petra 1  
**Acabado** decapado e hidrofugado  
**Dimensiones** l. 278, a. 101, h. 46 cm  
**Color** ver carta de colores  
**Fijación** apoyado por su propio peso o mediante resina epoxi  
**Peso** 1340 Kg  
**Palet** 300 x 110 cm

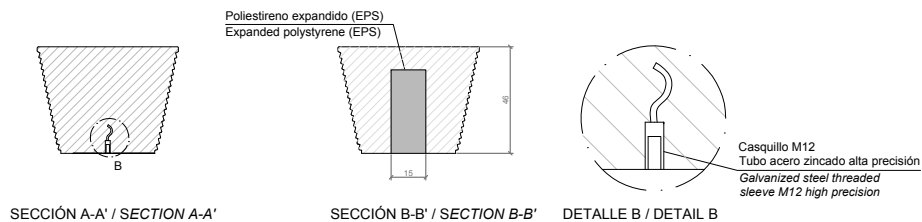
**Material** precast concrete Petra 1  
**Finish** etched and waterproofed  
**Dimensions** l. 278, w. 101, h. 46 cm  
**Colour** see colour catalogue  
**Fixing** resting on the ground or with epoxy resin  
**Weight** 1340 Kg  
**Pallet** 300 x 110 cm



GEOMETRIA / GEOMETRY



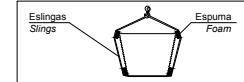
ESPECIFICACIONES / SPECIFICATIONS



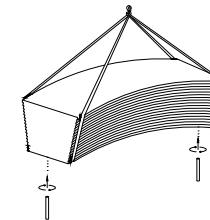
MANIPULACIÓN E INSTALACIÓN / HANDLING AND INSTALLATION

- 1 Elevar y enroscar la varilla  
Lift and thread the rod

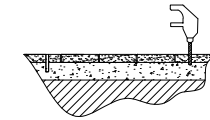
**MUY IMPORTANTE / VERY IMPORTANT**  
Proteger las esquinas con espuma del embalaje  
Protect the corners with packing foam



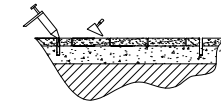
Elevación / Hoisting  
P= 1340 Kg



- 2 Perforar dos agujeros / Drill two holes each



- 3 Verter resina epoxy / Pour resin epoxy



- 4 Insertar la varilla en el agujero  
Insert metal rod in hole

Elevación / Hoisting  
P= 1340 Kg

