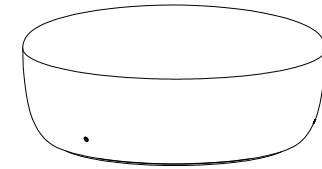
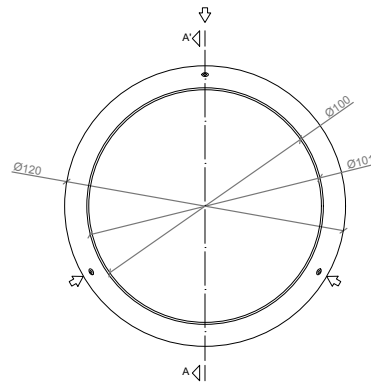


CARACTERÍSTICAS / FEATURES

| | | | |
|--------------------|---------------------------------------|-------------------|---|
| Material | hormigón Petra 1 | Material | precast concrete Petra 1 |
| Acabado | decapado e hidrofugado | Finish | scaled and waterproofed |
| Dimensiones | Ø 120, h. 49 cm | Dimensions | Ø 120, h. 49 cm |
| Color | ver carta de colores | Colour | see colour catalogue |
| Fijación | por su propio peso o con resina epoxi | Fixing | resting on the ground or with epoxy resin |
| Peso | 1.115 Kg | Weight | 1.115 Kg |
| Palet | 130 x 130 cm | Pallet | 130 x 130 cm |

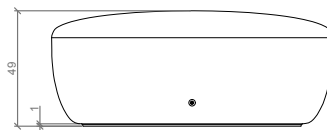


GEOMETRIA / GEOMETRY



Ubicación del casquillo roscado
Location of steel socket threaded

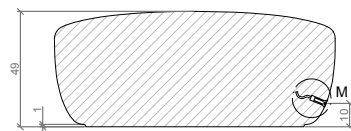
VISTA INFERIOR / BOTTOM VIEW



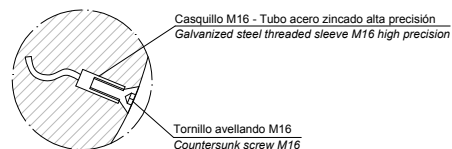
ALZADO / FRONT VIEW

ESCALA / SCALE : 1/ 20

ESPECIFICACIONES / SPECIFICATIONS



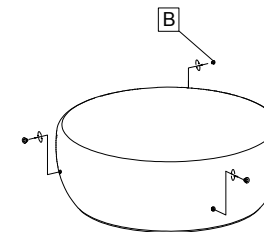
SECCIÓN A-A' / SECTION A-A'



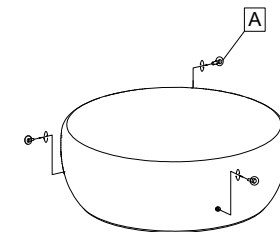
DETALLE N / DETAIL N

MANIPULACIÓN E INSTALACIÓN / HANDLING AND INSTALLATION

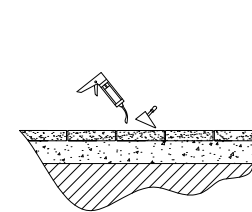
1 Extraer tapa / Extract stopper



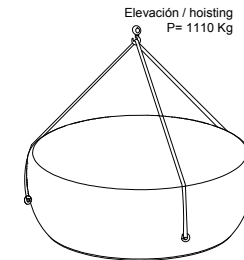
2 Enroscar cáncamo / Thread the eyebolt



3 Verter resina epoxy / Pour resin epoxy



4 Elevar e instalar / Lift and install



SISTEMA DE ELEVACIÓN / LIFTING SYSTEM

