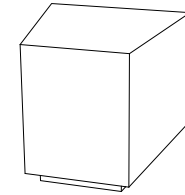


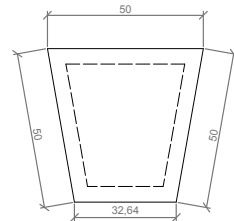
CARACTERÍSTICAS / FEATURES

**Material** hormigón Petra 1  
**Acabado** decapado e hidrofugado  
**Dimensiones** l. 50, a. 50, h. 45 cm  
**Color** ver carta de colores  
**Fijación** apoyado por su propio peso o con varilla metálica  
**Peso** 350 Kg  
**Palet** 110 x 110 cm (2 unidades)

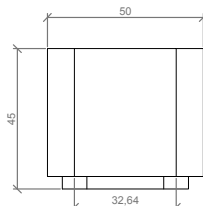
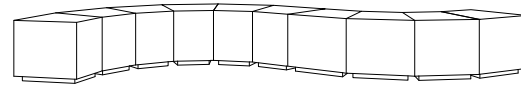
**Material** precast concrete Petra 1  
**Finish** scaled and waterproofed  
**Dimensions** l.50, w.50, h. 45 cm  
**Colour** see colour catalogue  
**Fixing** resting on the ground or with metal rod  
**Weight** 350 Kg  
**Pallet** 110 x 110 cm (2 units)



GEOMETRIA / GEOMETRY



PLANTA / TOP VIEW

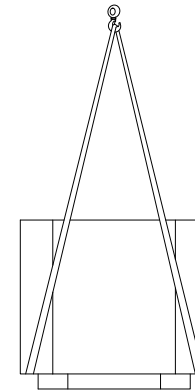


ALZADO / FRONT VIEW

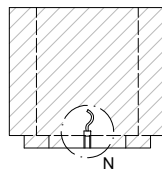
ESC.: 1/15

MANIPULACIÓN E INSTALACIÓN / HANDLING AND INSTALLATION

Elevación / Hoisting  
P= 350 Kg



ESPECIFICACIONES / SPECIFICATIONS



SECCIÓN A-A' / SECTION A-A'



DETALLE N / DETAIL N

Poliestireno expandido (EPS)  
Expanded polystyrene (EPS)