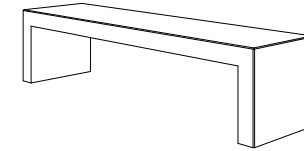


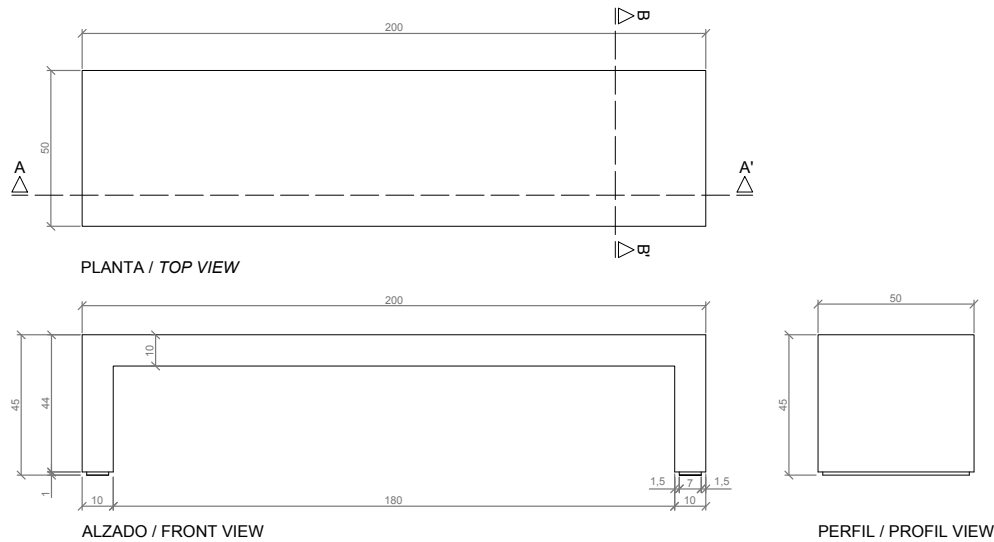
CARACTERÍSTICAS / FEATURES

Material hormigón Petra 1
Acabado decapado e hidrofugado
Dimensiones l. 200, a. 50, h. 45 cm
Color ver carta de colores
Fijación apoyado por su propio peso y con resina epoxy
Peso 426 Kg
Palet 210 x 55 x 65h cm
Peso palet 450 Kg

Material concrete Petra 1
Finish scaled and waterproofed
Dimensions l.200, w.50, h. 45 cm
Colour see colour catalogue
Fixing by its own weight and with epoxy resin
Weight 426 Kg
Pallet 210 x 55 x 65 cm
Weight pallet 450 Kg



GEOMETRIA / GEOMETRY

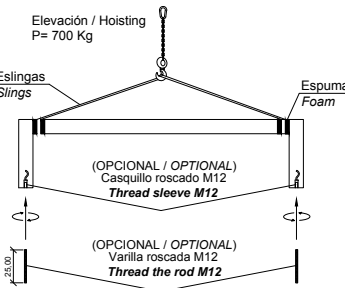


ESCALA / SCALE 1/20

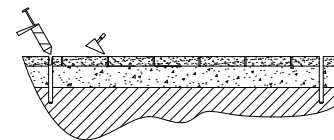
MANIPULACIÓN E INSTALACIÓN / HANDLING AND INSTALLATION

- 1 Elevar y enrosacar varillas inferiores
Lifting and screwing of lower links

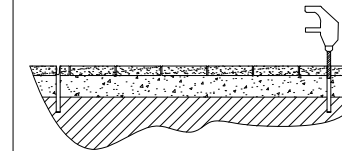
MUY IMPORTANTE / VERY IMPORTANT
 Proteger las esquinas con espuma del embalaje
Protect the corners with packing foam



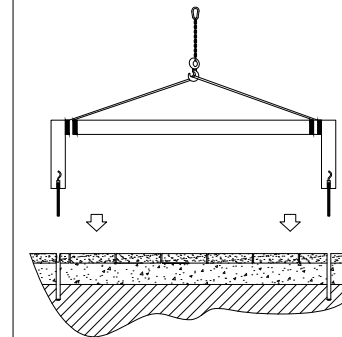
- 3 Verter resina epoxy
Pour resin epoxy



- 2 Perforar agujeros de Ø1,4cm
Drill holes of Ø1,4cm



- 4 Insertar las varillas M12 en los agujeros
Insert metal rods M12 in holes

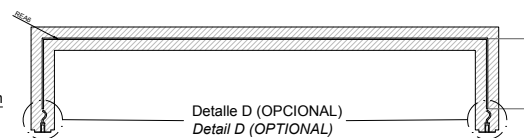


ESPECIFICACIONES / SPECIFICATIONS

Detalle D, OPCIONAL
 (Instalación con varilla metálica)
 Detail D (OPTIONAL)
 (Installation with metal rod)

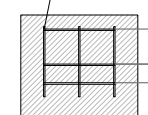


Casquillo M12 - Acero zincado alta precisión
 Threaded sleeve M12 - Galvanized steel high precision



SECCIÓN A-A' / SECTION A-A'

Malla electrosoldada con barra de Ø6 mm cada 150 mm
 Electrically soldered grating rods of Ø6 mm each 150 mm



SECCIÓN B-B' / SECTION B-B'