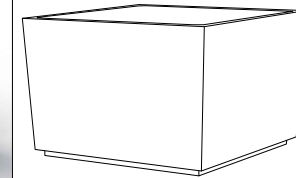
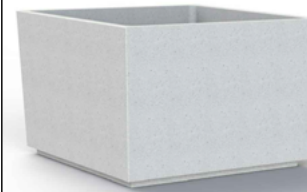


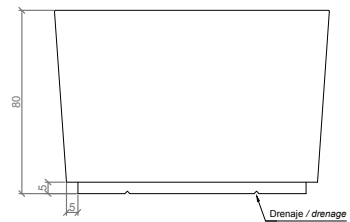
CARACTERÍSTICAS / FEATURES

<b>Material</b>	hormigón Petra 1	<b>Material</b>	precast concrete Petra 1
<b>Acabado</b>	decapado e hidrofugado	<b>Finish</b>	scaled and waterproofed
<b>Dimensiones</b>	l. 120, a. 120, h. 80 cm	<b>Dimensions</b>	l. 120, w. 120, h. 80 cm
<b>Color</b>	ver carta de colores	<b>Colour</b>	see colour catalogue
<b>Fijación</b>	apoyado por su propio peso o mediante resina epoxi	<b>Fixing</b>	resting on the ground or with epoxy resin
<b>Peso</b>	650 Kg / 837 L	<b>Weight</b>	650 Kg / 837 L
<b>Palet</b>	125 x 125 cm	<b>Pallet</b>	125 x 125 cm

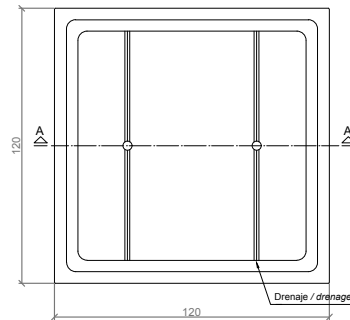
EMB0699



GEOMETRIA / GEOMETRY

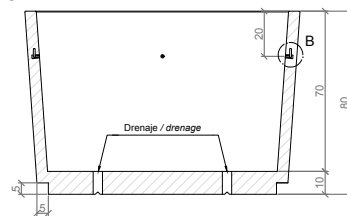


ALZADO / FRONT VIEW



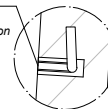
VISTA INFERIOR / BOTTOM VIEW

ESPECIFICACIONES / SPECIFICATIONS



SECCIÓN A-A' / SECTION A-A'

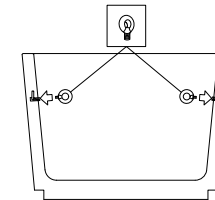
Casquillo M12  
Tubo acero zincado alta precisión  
Tube M12  
Galvanized steel pipe high precision



DETALLE B-B' / DETAIL B-B'

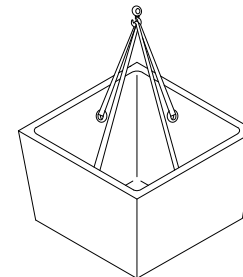
MANIPULACIÓN E INSTALACIÓN / HANDLING AND INSTALLATION

1 Enrosacar cáncamo, fijar eslingas e instalar / Thread the eyebolt, fixing slings and install.

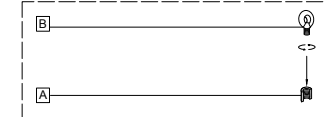


SOLO PARA DESCARGAR DEL PALET  
ONLY TO UNLOAD THE PALLET

Elevación / Hoisting  
P= 650 Kg



SISTEMA DE ELEVACIÓN / ANCHORAGE SYSTEM



A casquillo roscado / thread sleeve  
B cáncamo / eyebolt