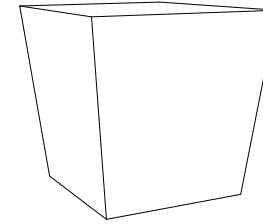


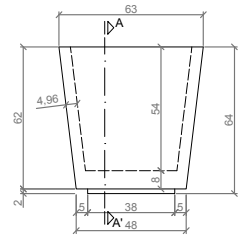
CARACTERISTICAS / FEATURES

Material hormigón Petra 1
Acabado decapado e hidrofugado
Dimensiones l. 62.52, a. 62.52, h. 64 cm
Color ver carta de colores
Fijación apoyado por su propio peso o mediante varilla metálica
Peso 225 Kg / 155 L
Palet 70 x 70 cm

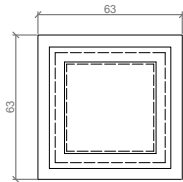
Material precast concrete Petra 1
Finish sanded and waterproofed
Dimensions l. 62.52, w. 62.52, h. 64 cm
Colour see colour catalogue
Fixing resting on the ground or with metal rod
Weight 225 Kg / 155 L
Pallet 70 x 70 cm



GEOMETRIA / GEOMETRY

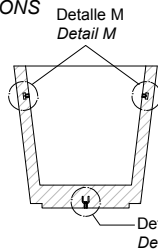


ALZADO / FRONT VIEW



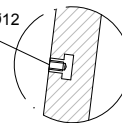
PLANTA / TOP VIEW

ESPECIFICACIONES / SPECIFICATIONS



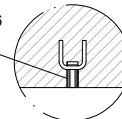
SECCIÓN A-A' / SECTION A-A'

Casquillo elevación MØ12
Fixing socket MØ12



DETALLE M
DETAIL M

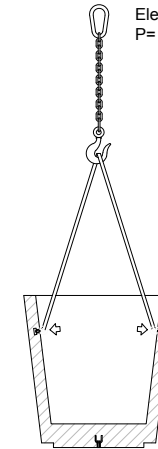
Casquillo fijación MØ16
Fixing socket MØ16



DETALLE N
DETAIL N

MANIPULACIÓN E INSTALACIÓN / HANDLING AND INSTALLATION

Enroscar cáncamo, fijar eslingas e instalar
Thread the eyebolt, fixing slings and install.



Elevación / hoisting
P= 225 Kg