

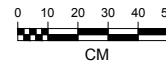
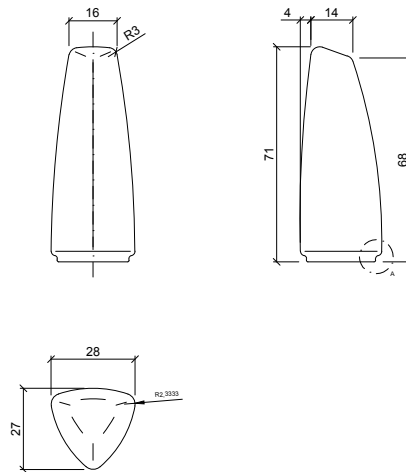
CARACTERÍSTICAS / FEATURES

Material hormigón *petra2*
Acabado decapado
Dimensiones l. 28, a. 27, h. 71 cm.
Color ver carta de colores
Fijación simplemente apoyado o mediante varillas metálicas
Peso 66 Kg
Palet 120 x 100 x 86 cm [12u / bulto]
Peso palet 812 Kg

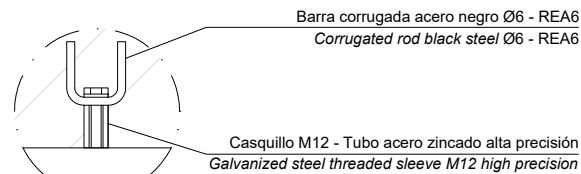
Material precast concrete *petra2*
Finish *scaled*
Dimensions l. 28, a. 27, h. 71 cm.
Colour see colour catalogue
Fixing resting on the ground or anchored with metal rod
Weight 66 Kg
Pallet 120 x 100 x 86 cm [12u / bulto]
Weight pallet 812 Kg



GEOMETRIA / GEOMETRY



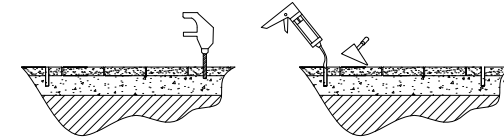
ESPECIFICACIONES / SPECIFICATIONS



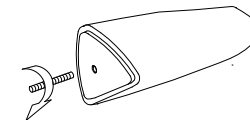
DETALLE B / DETAIL B

MANIPULACIÓN E INSTALACIÓN / HANDLING AND INSTALLATION

- 1 Perforar agujero y verter resina epoxy dentro
 Drill hole and pour resin epoxy inside hole



- 2 Posicionar la varilla roscada en el agujero central y enroscar
 Place the threaded rod into the center hole and thread



- 3 Insertar varilla roscada en agujero con resina epoxy
 Insert metal threaded rod in hole with epoxy resin

elevación / hoisting
 P= 66 Kg

