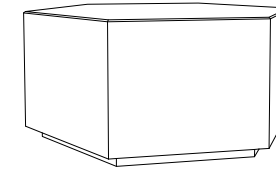


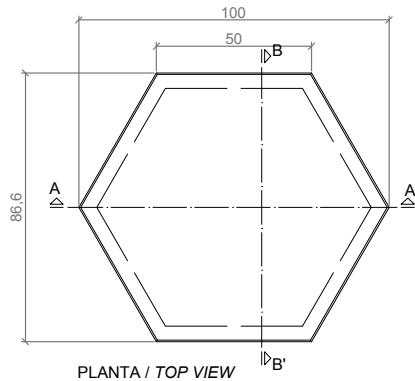
CARACTERISTICAS / FEATURES

**Material** hormigón Petra 1  
**Acabado** decapado e hidrofugado  
**Dimensiones** l. 100, a. 86,6, h. 45 cm  
**Color** ver carta de colores  
**Fijación** apoyado por su propio peso  
**Peso** 700 Kg  
**Palet** 120 x 100 cm (2 unidades)

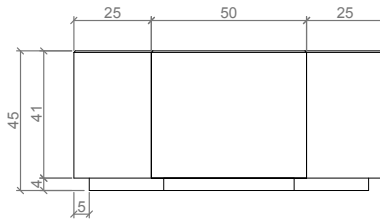
**Material** precast concrete Petra 1  
**Finish** scaled and waterproofed  
**Dimensions** l. 100, w. 86,6, h. 45 cm  
**Colour** see colour catalogue  
**Fixing** resting on the ground by its own weight  
**Weight** 700 Kg  
**Pallet** 120 x 100 cm (2 units)



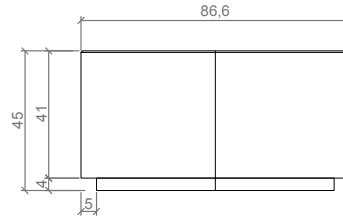
GEOMETRIA / GEOMETRY



PLANTA / TOP VIEW



ALZADO / FRONT VIEW

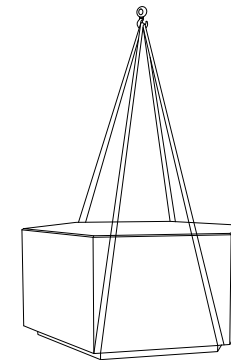


ALZADO / FRONT VIEW

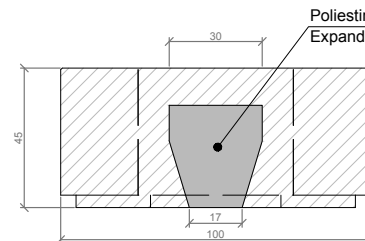
ESC.: 1/15

MANIPULACIÓN E INSTALACIÓN / HANDLING AND INSTALLATION

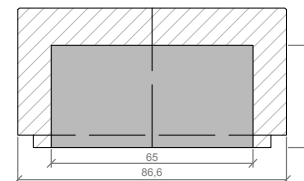
Elevación / Hoisting  
 P= 700 Kg



ESPECIFICACIONES / SPECIFICATIONS



SECCIÓN A-A' / SECTION A-A'



SECCIÓN B-B' / SECTION B-B'

ESC.: 1/15