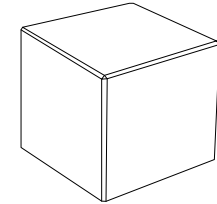


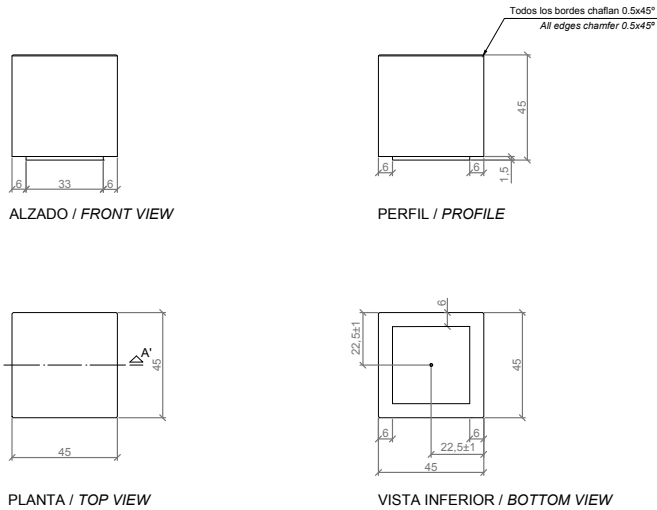
CARACTERÍSTICAS / FEATURES

Material hormigón Petra 1
Acabado decapado e hidrofugado
Dimensiones l. 45, a. 45, h. 45 cm
Color ver carta de colores
Fijación apoyado por su propio peso o mediante varillas metálicas
Peso 223 Kg (1un) / 440 kg (2un)
Palet 70 x 70 cm (1 unidad)
 120 x 80 cm (2 unidades)
 210 x 55 cm (4 unidades)

Material precast concrete Petra 1
Finish etched and waterproofed
Dimensions l. 45, w. 45, h. 45 cm
Colour see colour catalogue
Fixing resting on the ground or with metal rod
Weight 223 Kg (1un) / 440 kg (2un)
Pallet 70 x 70 cm (1unit)
 120 x 80 cm (2 units)
 210 x 55 cm (4 units)

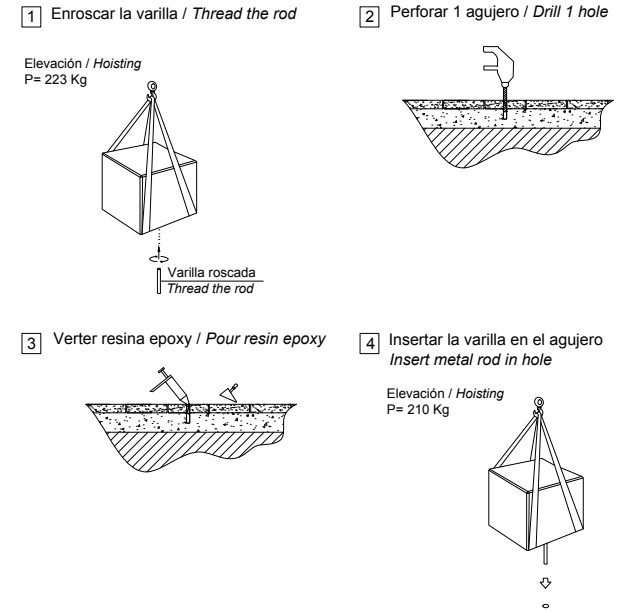


GEOMETRIA / GEOMETRY

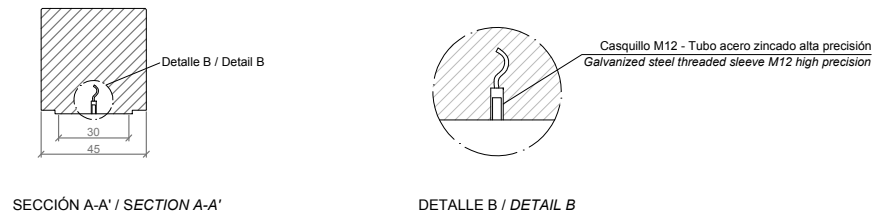


ESCALA / SCALE: 1/20

MANIPULACIÓN E INSTALACIÓN / HANDLING AND INSTALLATION



ESPECIFICACIONES / SPECIFICATIONS



ESCALA / SCALE: 1/20