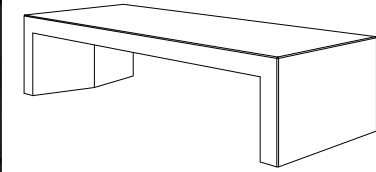


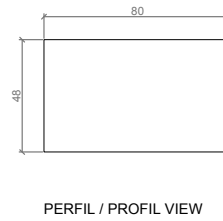
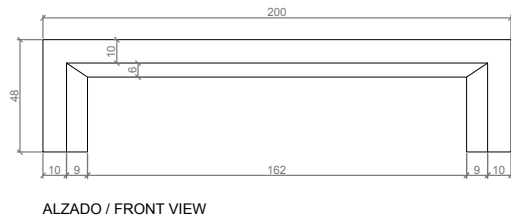
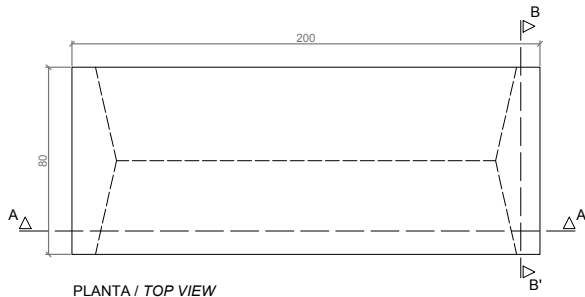
CARACTERÍSTICAS / FEATURES

Material hormigón Petra 1
Acabado decapado e hidrofugado
Dimensiones l. 200, a. 80, h. 48 cm
Color ver carta de colores
Fijación apoyado por su propio peso o mediante resina epoxi
Peso 700 Kg
Palet 210 x 90 cm

Material precast concrete Petra 1
Finish scaled and waterproofed
Dimensions l. 200, w. 80, h. 48 cm
Colour see colour catalogue
Fixing resting on the ground or with epoxy resin
Weight 700 Kg
Pallet 210 x 90 cm



GEOMETRIA / GEOMETRY

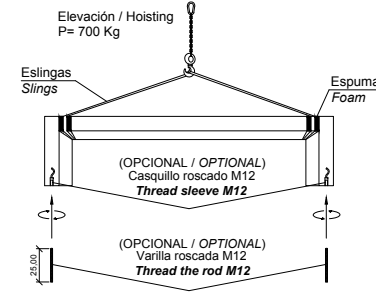


ESCALA / SCALE 1/20

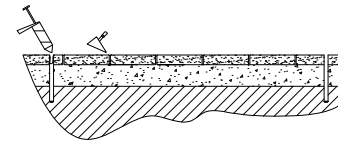
MANIPULACIÓN E INSTALACIÓN / HANDLING AND INSTALLATION

- 1 Elevar y enrosacar varillas inferiores
Lifting and screwing of lower links

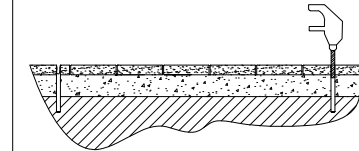
MUY IMPORTANTE / VERY IMPORTANT
Proteger las esquinas con espuma del embalaje
Protect the corners with packing foam



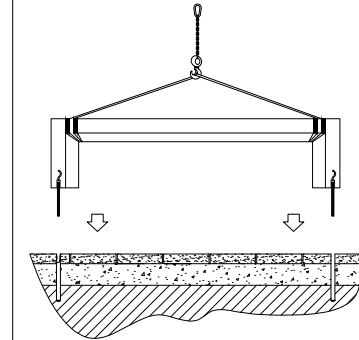
- 3 Verter resina epoxy
Pour resin epoxy



- 2 Perforar agujeros de Ø1,4cm
Drill holes of Ø1,4cm



- 4 Insertar las varillas M12 en los agujeros
Insert metal rods M12 in holes

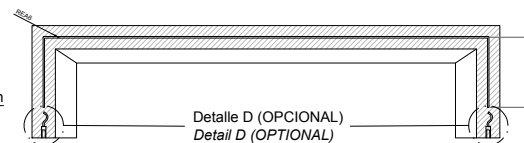


ESPECIFICACIONES / SPECIFICATIONS

Detalle D, OPCIONAL
(Instalación con varilla metálica)
Detail D (OPTIONAL)
(Installation with metal rod)

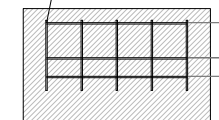


Casquillo M12 - Acero zincado alta precisión
Threaded sleeve M12 - Galvanized steel high precision



SECCIÓN A-A' / SECTION A-A'

Malla electrosoldada con barra de Ø6 mm cada 150 mm
Electrically soldered grating rods of Ø6 mm each 150 mm



SECCIÓN B-B' / SECTION B-B'