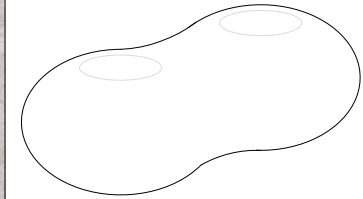


CARACTERÍSTICAS / FEATURES

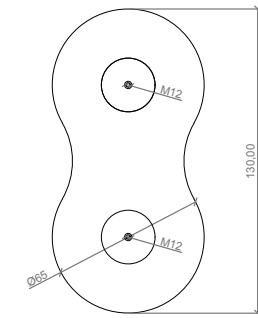
Material hormigón Petra 1
Acabado decapado e hidrofugado
Dimensiones l. 130, a. 65, h. 41 cm
Color ver carta de colores
Fijación apoyado por su propio peso
 (OPCIONAL: con varillas metálicas)
Peso 530 Kg
Palet 135 x 70 cm (1 unidad, no remontable)

Material precast concrete Petra 1
Finish etched and waterproofed
Dimensions l. 130, w. 65, h. 41 cm
Colour see colour catalogue
Fixing resting on the ground
 (OPTIONAL: with metal rods)
Weight 530 Kg
Pallet 135 x 70 cm (1 unit, no stackable)

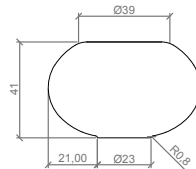
REP0511



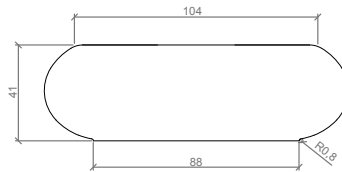
GEOMETRIA / GEOMETRY



VISTA INFERIOR / BOTTOM VIEW



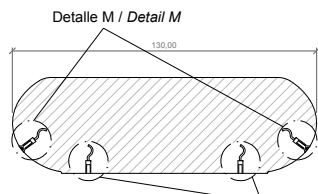
ALZADO / FRONT VIEW



PERFIL / RIGHT SIDE

ESCALA / SCALE : 1/20

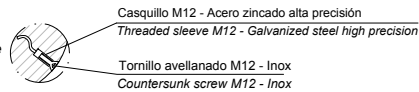
ESPECIFICACIONES / SPECIFICATIONS



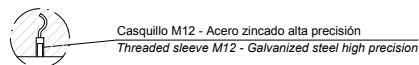
SECCIÓN / SECTION

OPCIONAL / OPTIONAL
Detalle N / Detail N

DETALLE M / DETAIL M
Casquillo elevación / Lifting sleeve

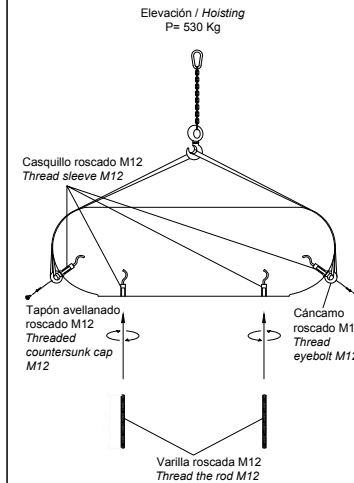


OPCIONAL / OPTIONAL
DETALLE N / DETAIL N
Casquillo fijación / Fixing sleeve



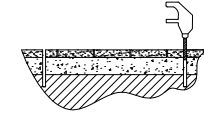
MANIPULACIÓN E INSTALACIÓN / HANDLING AND INSTALLATION

- 1 Extraer tapones, enroscar cáncamos para elevación y (OPCIONAL) enroscar varillas inferiores
 Extract toppers, thread eyebolts and (OPTIONAL) thread the lower rods

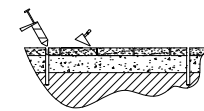


OPCIONAL / OPTIONAL

- 2 Perforar agujeros de Ø1,4cm
 Drill holes of Ø1,4 cm



- 3 Verter resina epoxy / Pour resin epoxy



- 4 Insertar las varillas M12 en los agujeros
 Insert metal rods M12 in holes

