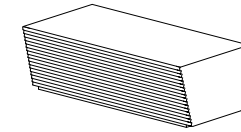


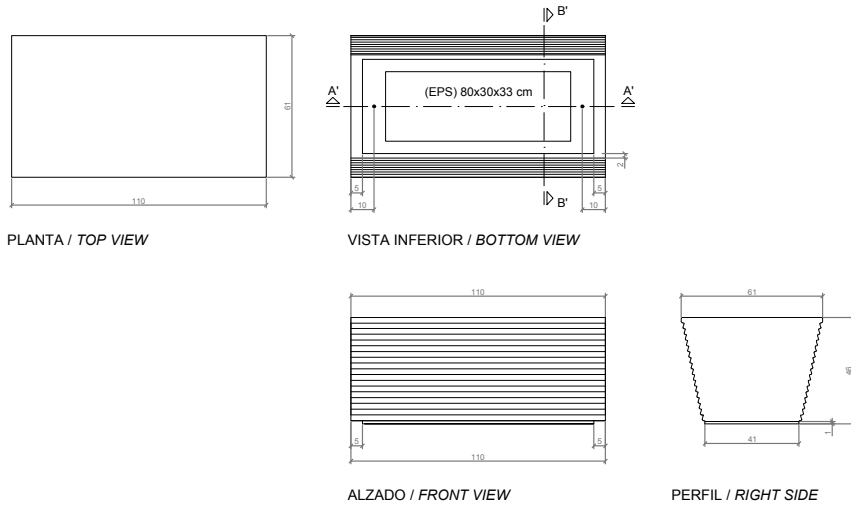
CARACTERÍSTICAS / FEATURES

Material hormigón Petra 1
Acabado decapado e hidrofugado
Dimensiones l. 110, a. 61, h. 46 cm
Color ver carta de colores
Fijación apoyado por su propio peso o mediante resina epoxi
Peso 460 Kg
Palet 120 x 80 cm

Material precast concrete Petra 1
Finish etched and waterproofed
Dimensions l. 110, w. 61, h. 46 cm
Colour see colour catalogue
Fixing resting on the ground or with epoxy resin
Weight 460 Kg
Palet 120 x 80 cm

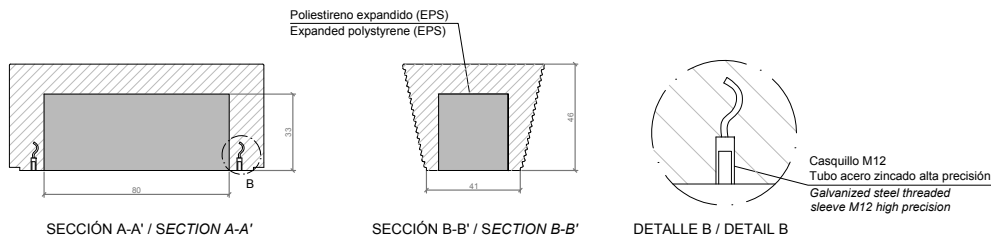


GEOMETRIA / GEOMETRY



ESC. 1:20

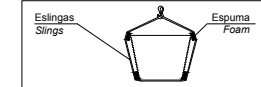
ESPECIFICACIONES / SPECIFICATIONS



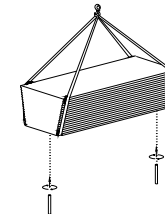
MANIPULACIÓN E INSTALACIÓN / HANDLING AND INSTALLATION

- 1 Elevar y enroscar la varilla / Lift and thread the rod

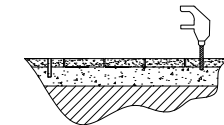
MUY IMPORTANTE / VERY IMPORTANT
 Proteger las esquinas con espuma del embalaje / Protect the corners with packing foam



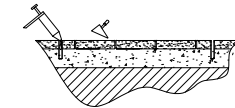
Elevación / Hoisting
 P= 460 Kg



- 2 Perforar dos agujeros / drill two holes



- 3 Verter resina epoxy / pour resin epoxy



- 4 Insertar la varilla en el agujero / insert metal rod in hole

Elevación / Hoisting
 P= 460 Kg

