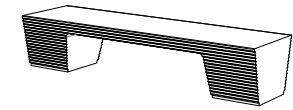
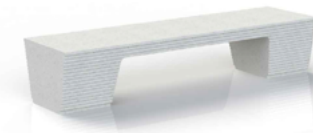


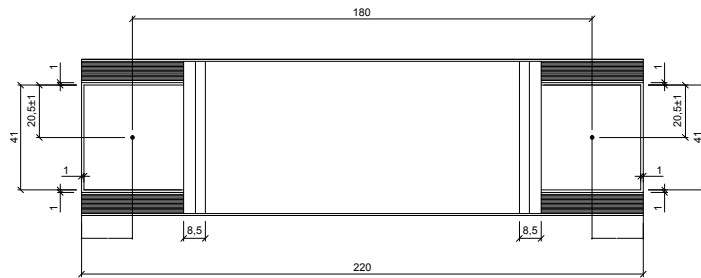
CARACTERÍSTICAS / FEATURES

Material hormigón petra 1
Acabado decapado e hidrofugado
Dimensiones l. 220, a. 61, h. 46 cm.
Color ver carta de colores
Fijación simplemente apoyado o mediante varillas metálicas
Peso 660 Kg
Bulto 220 x 80 x 60 cm
Peso bulto 680 Kg

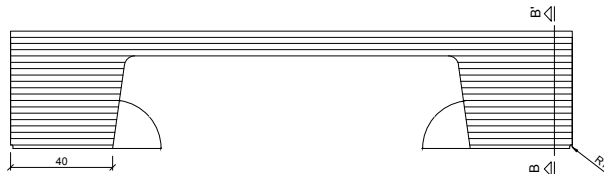
Material concrete petra 1
Finish scaled and waterproofed
Dimensions l. 220, w. 61, h. 46cm
Colour see colour catalogue
Fixing resting on the ground or anchored with metal rod
Weight 660 Kg
Package 220 x 80 x 60 cm
Weight package 680 Kg



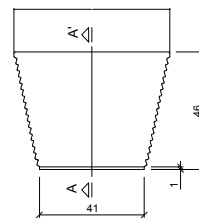
GEOMETRIA / GEOMETRY



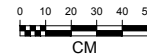
VISTA INFERIOR / BOTTOM VIEW



ALZADO / FRONT VIEW

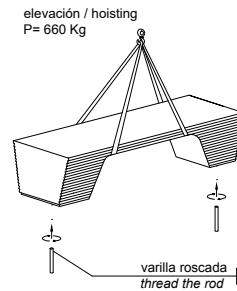


PERFIL / RIGHT SIDE

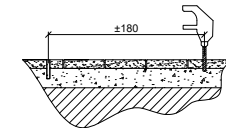


MANIPULACIÓN E INSTALACIÓN / HANDLING AND INSTALLATION

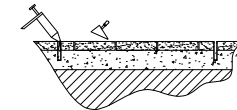
1 enroscar la varilla / thread the rod



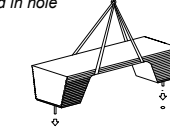
2 perforar 2 agujeros Ø24 a distancia 180 cm
drill 2 holes Ø24 each at a distance of 180 cm



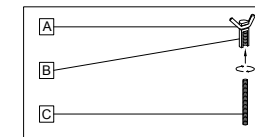
3 verter resina epoxy / pour resin epoxy



4 insertar la varilla en el agujero
insert metal rod in hole

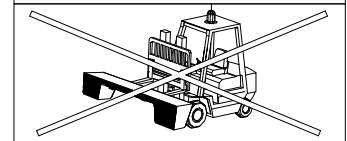


SISTEMA DE FIJACIÓN / ANCHORAGE SYSTEM

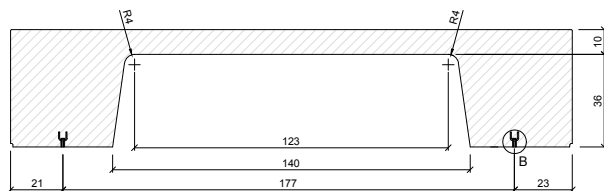


- A barra corrugada / corrugated rod
- B casquillo roscado / thread sleeve
- C varilla roscada / thread the rod

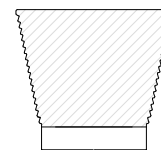
ATENCIÓN!!!! no usar pala elevadora para la manipulación
ATTENTION!!! shouldn't use Forklift for handling



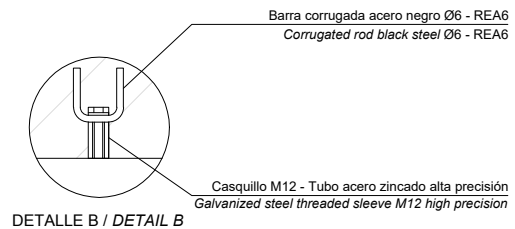
ESPECIFICACIONES / SPECIFICATIONS



SECCIÓN A-A' / SECTION A-A'



SECCIÓN B-B' / SECTION B-B'



DETALLE B / DETAIL B