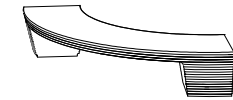


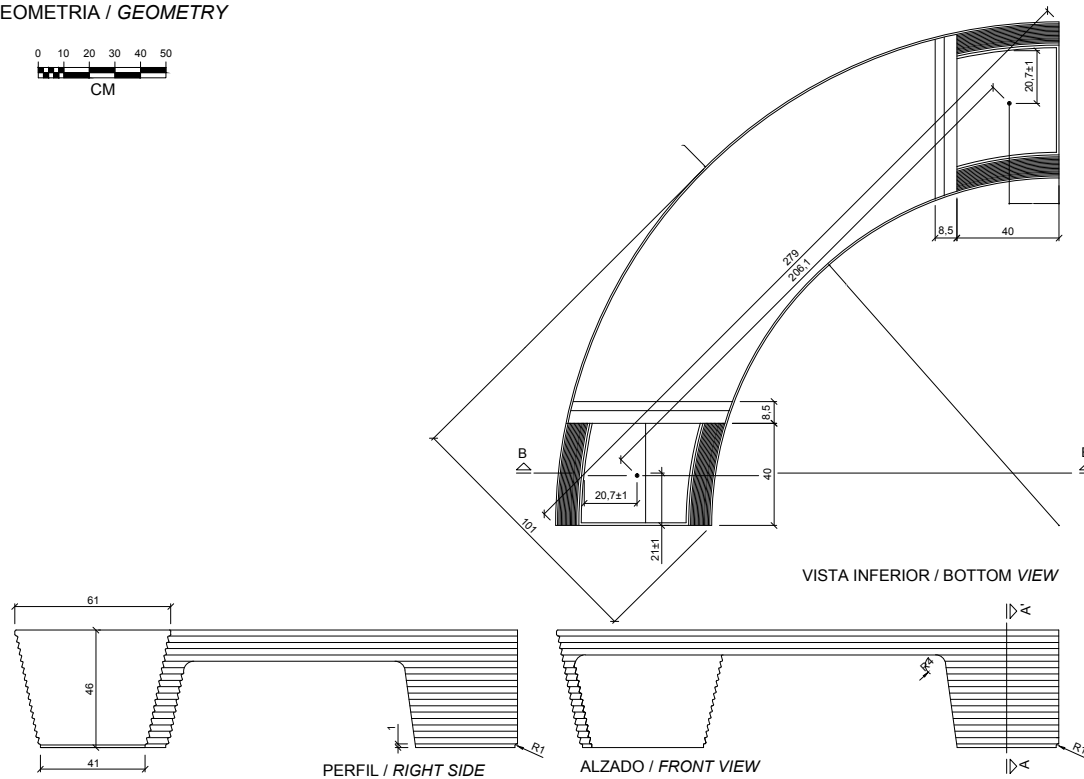
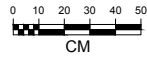
**CARACTERÍSTICAS / FEATURES**

**Material** hormigón petra 1  
**Acabado** decapado e hidrofugado  
**Dimensiones** l. 279, a. 101, h. 46 cm.  
**Color** ver carta de colores  
**Fijación** simplemente apoyado o mediante varillas metálicas  
**Peso** 720 Kg  
**Bulto** 300 x 110 x 60 cm  
**Peso bulto** 750 Kg

**Material** concrete petra 1  
**Finish** scaled and waterproofed  
**Dimensions** l. 279, w. 101, h. 46 cm  
**Colour** see colour catalogue  
**Fixing** resting on the ground or anchored with metal rod  
**Weight** 720 Kg  
**Package** 300 x 110 x 60 cm  
**Weight package** 750 Kg



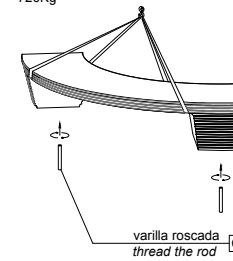
**GEOMETRIA / GEOMETRY**



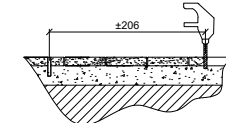
**MANIPULACIÓN E INSTALACIÓN / HANDLING AND INSTALLATION**

1 enroskar la varilla / thread the rod

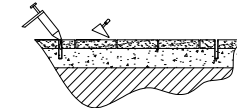
elevación / hoisting  
 P= 720Kg



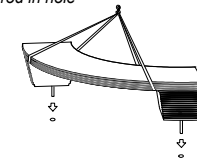
2 perforar 2 agujeros Ø24 a distancia ±206 cm  
 drill 2 holes Ø24 each at a distance ±206 cm



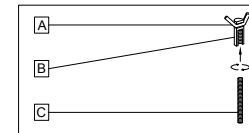
3 verter resina epoxy / pour resin epoxy



4 insertar la varilla en el agujero  
 insert metal rod in hole

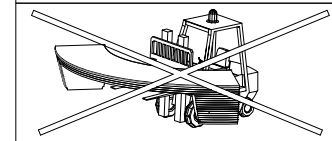


**SISTEMA DE FIJACIÓN / ANCHORAGE SYSTEM**

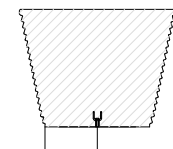


A barra corrugada / corrugated rod  
 B casquillo roscado / thread sleeve  
 C varilla roscada / thread the rod

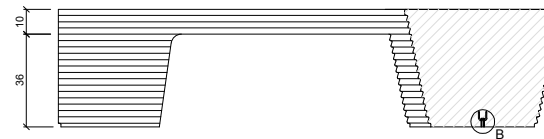
**ATENCIÓN!!!!** no usar pata elevadora para la manipulación  
**ATTENTION!!!** shouldn't use Forklift for handling



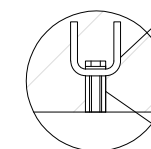
**ESPECIFICACIONES / SPECIFICATIONS**



SECCIÓN A-A' / SECTION A-A'



SECCIÓN B-B' / SECTION B-B'



DETALLE B / DETAIL B

Barra corrugada acero negro Ø6 - REA6  
 Corrugated rod black steel Ø6 - REA6

Casquillo M12 - Tubo acero zincado alta precisión  
 Galvanized steel threaded sleeve M12 high precision